



Warehouse Facilities



DTI SmartFloor Maintenance SOP



- 1) Attach **blue pad** on driver and lock with Velcro pad holder lock
 - Scrubber discs will face the ground
 - **Blue pad** should be used for daily scrubbing



- 2) Install driver with **blue pad** on scrubber



- 3) Fill scrubber with water and add "DTI Rejuvenating Cleaner" while wearing protective goggles and gloves.
 - Ensure tank is fully drained prior to start




Scrubber Model	Cleaner
Ride-on	4 pumps
Walk-behind	1 pump



Warehouse Facilities



DTI SmartFloor Maintenance SOP

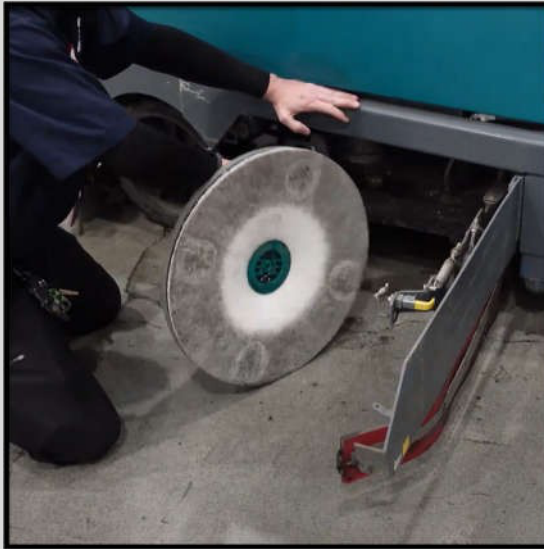
		
<p>4) Scrubber settings:</p> <ul style="list-style-type: none">- Drive Speed: MEDIUM- Pressure: MEDIUM- Water: LEVEL 2- <u>Do not run in "ECO" mode</u>	<p>5) The entire warehouse should be scrubbed with the blue pad daily.</p> <ul style="list-style-type: none">- Results will be achieved over time with twice daily scrubbing (AM & PM)- Result timeline will vary based on initial condition of concrete	<p>6) Expected results with daily scrubbing:</p> <ul style="list-style-type: none">- Stains will diminish over time- Improved gloss retention- Increased stain resistance



Warehouse Facilities



DTI SmartFloor Maintenance SOP



7) Remove the driver and **blue pad** after each shift:

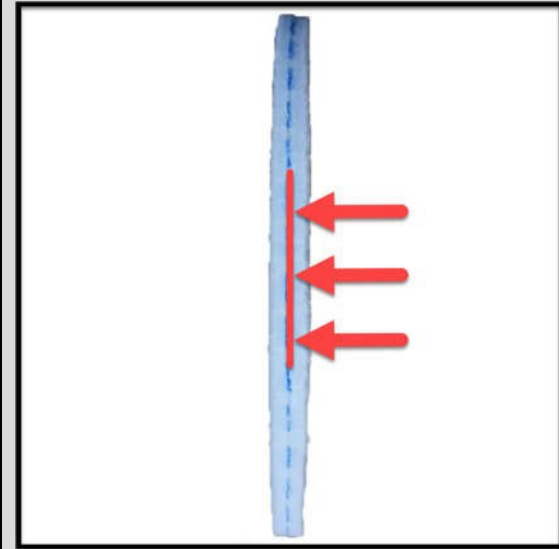
- Remove the driver from the scrubber
- Remove the pad from the driver



8) Pad cleaning

- Remove any foreign debris from pad
- Thoroughly rinse with water
- Hang up to dry

Thorough cleaning will extend pad life



9) Pad Replacement





- Replace when the colored line (blue or orange) is no longer visible
- A set of blue pads should last 1 week



Warehouse Facilities



DTI SmartFloor Maintenance SOP

		 <p>DTI Supplies Re-Order Form:</p>  <p>dtindustrialflooring.com/re-order-smartfloor/</p>
<p>10) Fully drain all waste water after each cleaning</p>	<p>11) Notes</p> <ul style="list-style-type: none">- Do not scrub over polymer flooring- Do not run scrubber in "Eco" mode- The orange pad should only be used for heavy stains. They are available only for the walk-behind scrubber when individual stains need attention.	<p>DTI Account Representative: David Philip david@dti-cs.com Cell: (209) 407-7523 Office: (209) 879-9814</p>